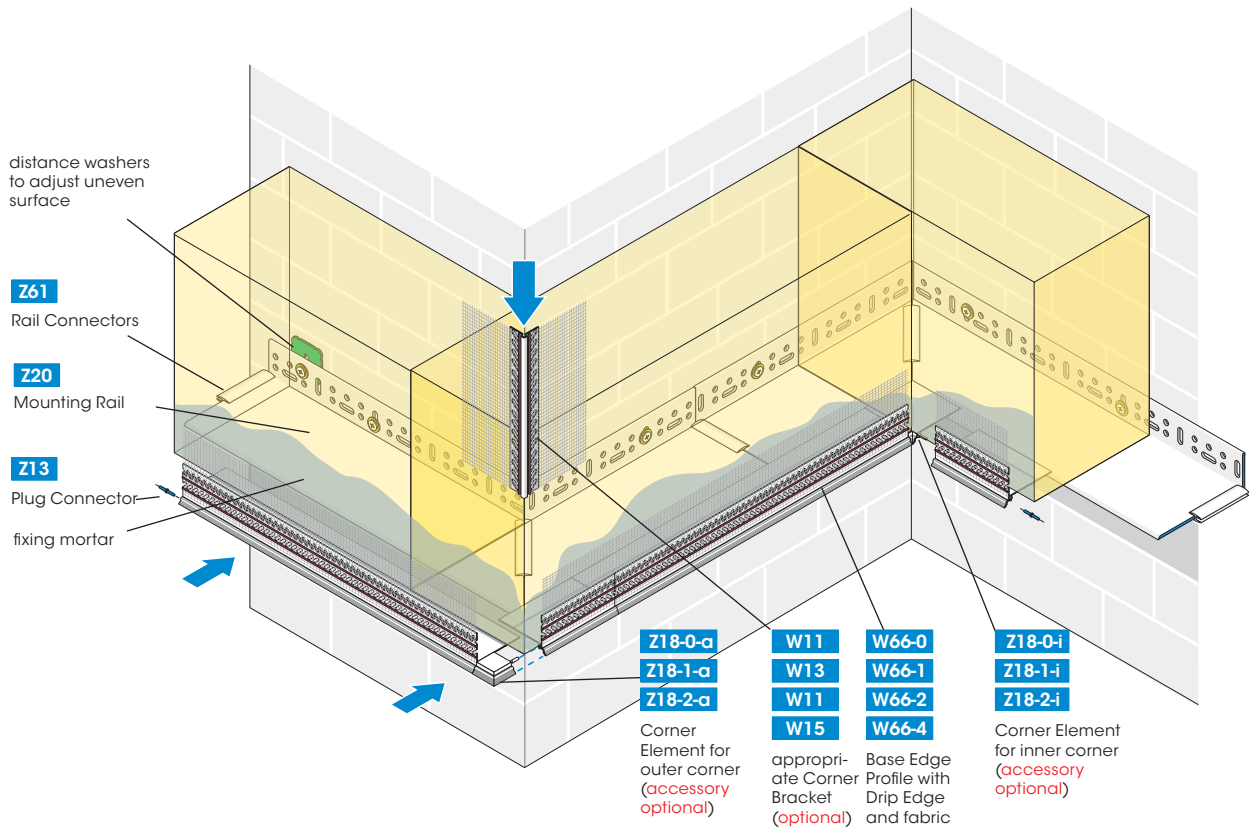


50/100/160

## APU Mounting Rail Z20 for Base Edge Profiles W66



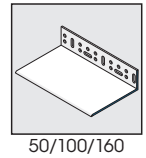
The APU Mounting Rail Z20, which is available in 3 different outreaches, forms along with the APU Base Edge Profiles W66 a closed surface bordering the ETIC system for insulation thicknesses of 50 to 300 mm (perimeter insulation is required over 160 mm).

In order to plan a suitable configuration see the next page.

(For further information on the W66 profiles see the W66 brochures or visit us under [www.apu.ch](http://www.apu.ch))

### Available packed unit:

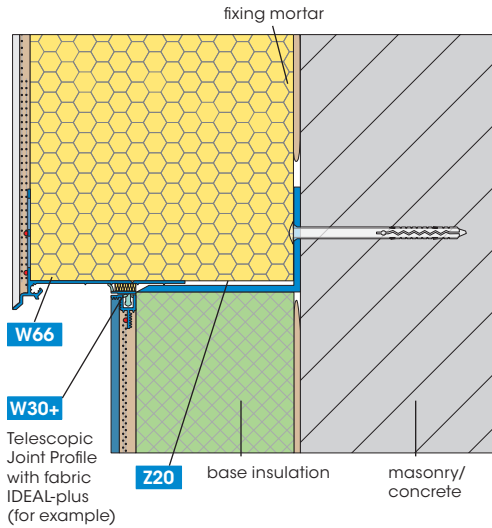
- Z20: 15 rails of 2.00 m = 30.00 m
- W66-0 to -4: 25 bars of 2.00 m = 50.00 m (optional)
- Z23: 25 bars of 2.00 m = 50.00 m (optional)



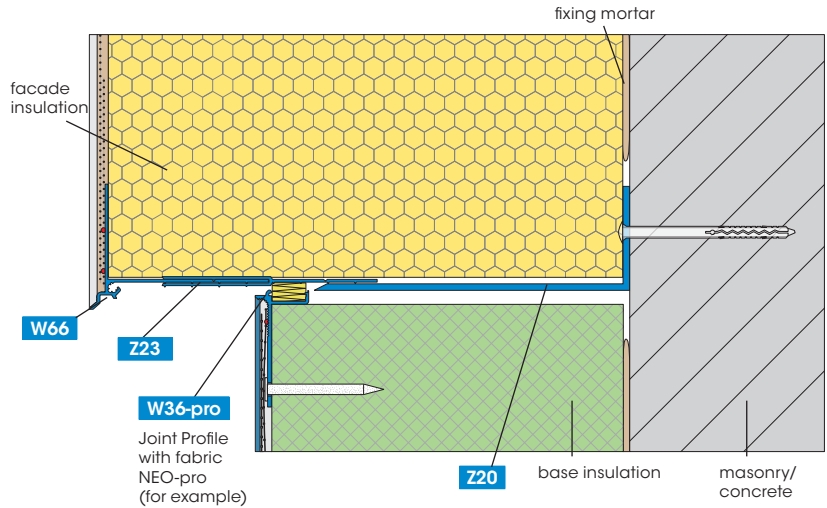
50/100/160

Application examples

Standard application (DS 50 to 200 mm)



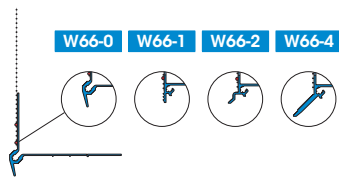
Passive house construction (DS 200 to 300 mm)



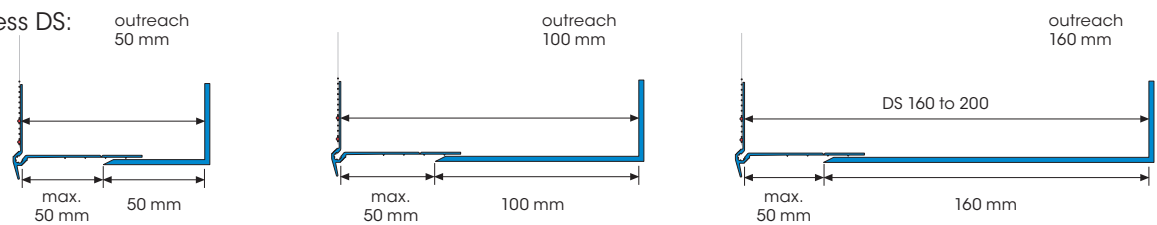
Configuration for standard applications (DS 50 to 200 mm)

profile selection: Base Edge Profile W66

Mounting Rail Z20



insulation thickness DS:

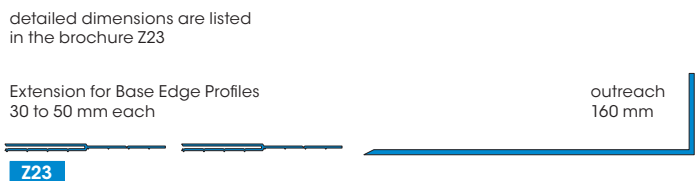
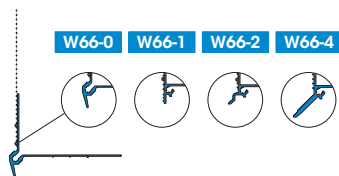


Configuration for passive house application (DS 200 to 300 mm)

profile selection: Base Edge Profiles W66

Extension Z23 (2x)

Mounting Rail Z20



insulation thickness DS:

